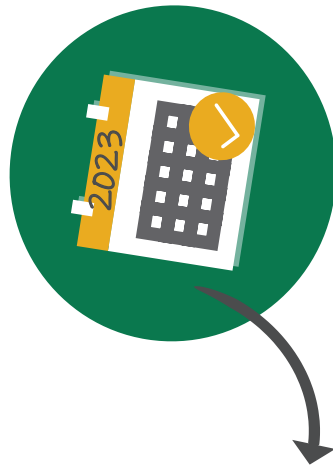




City of Vadnais Heights  
800 East County Road E  
Vadnais Heights, MN 55127

[RamseyRecycles.com](http://RamseyRecycles.com)



Calendar Inside!



# RECYCLING REMINDERS

- **Single Sort Recycling is easy** - no separating needed! Place all recyclable items in the cart loose, **NOT in plastic bags**.
- Place your recycling cart **3 feet behind the curb** (*not in the street*), and 3 feet away from all other objects by **7 am** on your collection day. Remove by 10 pm on collection day.
- Store recycling cart in the **garage, rear or side yard**, provided it is screened.
- Empty all food and liquids and give a **quick rinse**.

**Did you know?**  
You can get a second recycling cart at no cost! Call your hauler directly to coordinate an additional cart!

### Questions?

For information about disposal of **household hazardous waste and electronic waste**, contact Ramsey County 24/7 at 651-633-EASY(3279) or visit [RamseyRecycles.com](http://RamseyRecycles.com)

For recycling questions or to report a concern regarding your collection services, **please contact your hauler** or City Hall.



**REPUBLIC**  
SERVICES

320-252-9608  
[RepublicServices.com](http://RepublicServices.com)



952-890-1100  
[WM.com](http://WM.com)



Vadnais Heights

**City Hall**  
651-204-6000  
[CityVadnaisHeights.com](http://CityVadnaisHeights.com)

# When is My Collection Day?

- **Trash collection** is every Wednesday.
- **Recycling collection** is every other Wednesday (*Green/Gold week based on address*)
- If your service day falls on or any day after a holiday, *your service will be delayed one day that week.*

● Green Week ● Gold Week ● Holiday ○ Holiday Week

More information about trash and recycling service in Vadnais Heights: [cityvadnaisheights.com/trash](http://cityvadnaisheights.com/trash)

## ALWAYS RECYCLE:



Metal Cans



Paper



Dairy & Juice Cartons



Glass Bottles & Jars



Flattened Cardboard & Paperboard



Plastic Bottles & Containers #1, #2 & #5

## DO NOT INCLUDE IN YOUR RECYCLING CART:



Food Waste



Plastic Bags



Sharps & Medical Waste



Foam Cups & Containers

JANUARY							JULY						
Su	Mo	Tu	We	Th	Fr	Sa	Su	Mo	Tu	We	Th	Fr	Sa
1	2	3	4	5	6	7	2	3	4	5	6	7	8
8	9	10	11	12	13	14	9	10	11	12	13	14	15
15	16	17	18	19	20	21	16	17	18	19	20	21	22
22	23	24	25	26	27	28	23	24	25	26	27	28	29
29	30	31					30	31					

FEBRUARY							AUGUST						
Su	Mo	Tu	We	Th	Fr	Sa	Su	Mo	Tu	We	Th	Fr	Sa
			1	2	3	4							
5	6	7	8	9	10	11	6	7	8	9	10	11	12
12	13	14	15	16	17	18	13	14	15	16	17	18	19
19	20	21	22	23	24	25	20	21	22	23	24	25	26
26	27	28					27	28	29	30	31		

MARCH							SEPTEMBER						
Su	Mo	Tu	We	Th	Fr	Sa	Su	Mo	Tu	We	Th	Fr	Sa
			1	2	3	4						1	2
5	6	7	8	9	10	11	3	4	5	6	7	8	9
12	13	14	15	16	17	18	10	11	12	13	14	15	16
19	20	21	22	23	24	25	17	18	19	20	21	22	23
26	27	28	29	30	31		24	25	26	27	28	29	30

APRIL							OCTOBER						
Su	Mo	Tu	We	Th	Fr	Sa	Su	Mo	Tu	We	Th	Fr	Sa
						1	1	2	3	4	5	6	7
2	3	4	5	6	7	8	8	9	10	11	12	13	14
9	10	11	12	13	14	15	15	16	17	18	19	20	21
16	17	18	19	20	21	22	22	23	24	25	26	27	28
23	24	25	26	27	28	29	29	30	31				
30													

MAY							NOVEMBER						
Su	Mo	Tu	We	Th	Fr	Sa	Su	Mo	Tu	We	Th	Fr	Sa
	1	2	3	4	5	6				1	2	3	4
7	8	9	10	11	12	13	5	6	7	8	9	10	11
14	15	16	17	18	19	20	12	13	14	15	16	17	18
21	22	23	24	25	26	27	19	20	21	22	23	24	25
28	29	30	31				26	27	28	29	30		

JUNE							DECEMBER						
Su	Mo	Tu	We	Th	Fr	Sa	Su	Mo	Tu	We	Th	Fr	Sa
				1	2	3						1	2
4	5	6	7	8	9	10	3	4	5	6	7	8	9
11	12	13	14	15	16	17	10	11	12	13	14	15	16
18	19	20	21	22	23	24	17	18	19	20	21	22	23
25	26	27	28	29	30		24	25	26	27	28	29	30
							31						